



Metal body products
available for Private Brand
(2023)

New!

Ceramic Roller CR01

Matte Black

& Camouflage



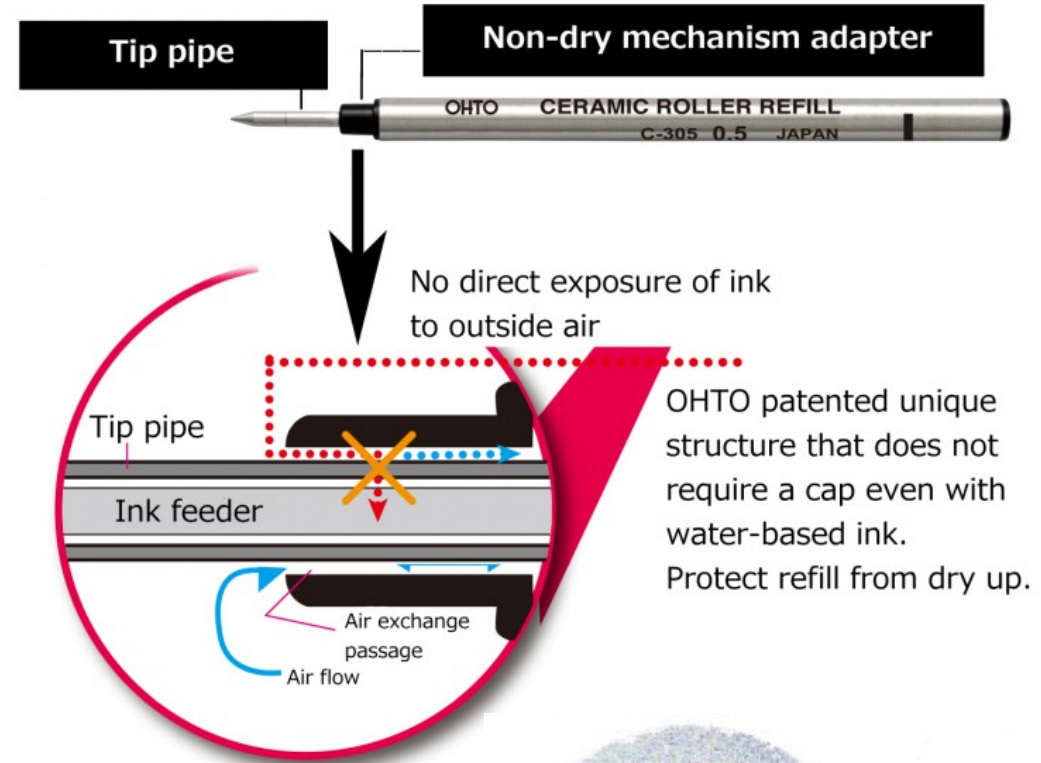
Bold and Solid

Diameter: 13.2mm (max 16.7mm)
Weight: 33.4g

Model: CR01
Refill: Ceramic Roller Refill
Body color:
Matt Black/Camouflage Kaki/Camouflage Black

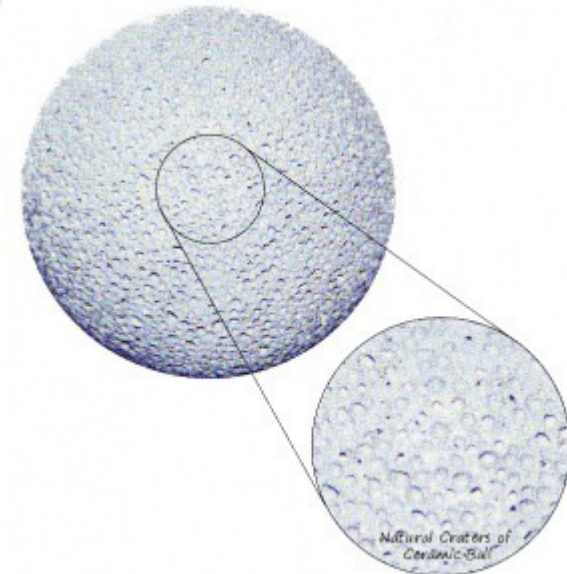
Non-Dry Refill(Pat.)

Our Non-Dry technology prevents the writing tip from drying out even without the cap on.



SiC Ceramic Ball

Writing ball is made of high-quality and hard SiC ceramic having unlimited natural craters. The ink get along very well with SiC Ceramic. It does not rust, and gives instant and smooth writing contineously.



Ceramic Roller

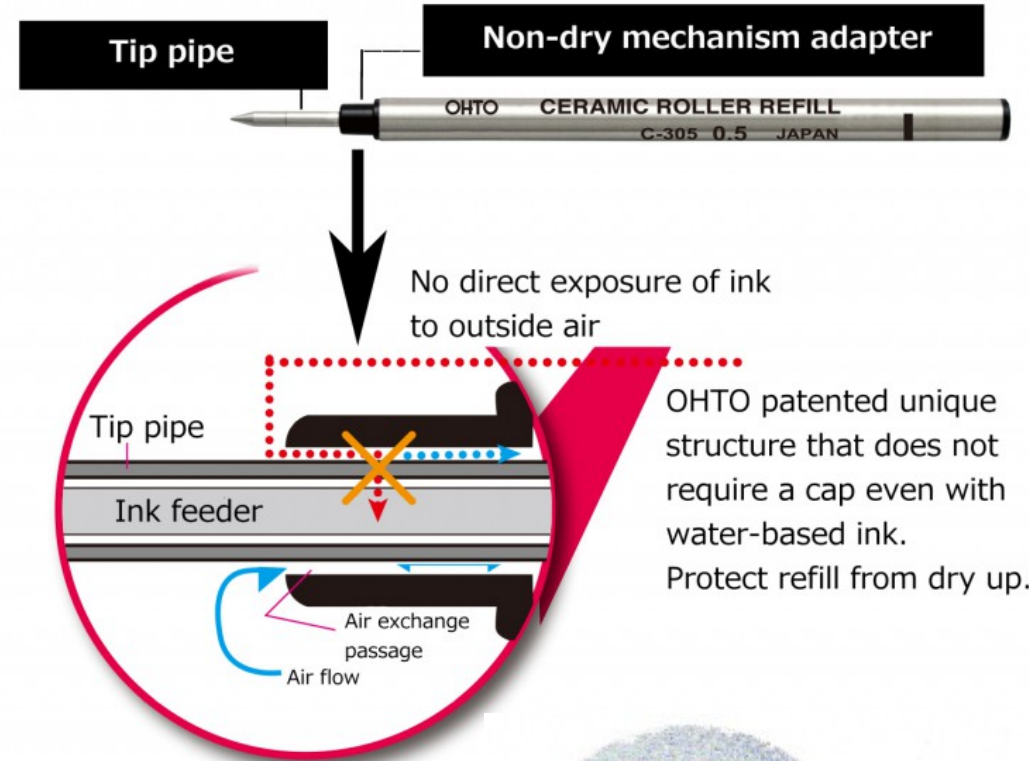
[セルサス]

CELSUS



Non-Dry Refill(Pat.)

Our Non-Dry technology prevents the writing tip from drying out even without the cap on.

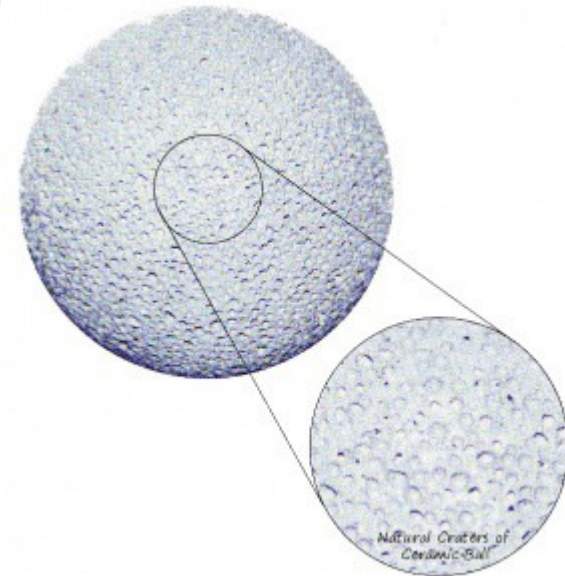


Elastomer Grip



SiC Ceramic Ball

Writing ball is made of high-quality and hard SiC ceramic having unlimited natural craters. The ink get along very well with SiC Ceramic. It does not rust, and gives instant and smooth writing contineously.



Model: CB-15C
 Body color:
 Black/Brown/Wine red/Blue
 Refill: Ceramic Roller Refill

Ceramic Roller

LIBERTY



Non-Dry Refill(Pat.)

Our Non-Dry technology prevents the writing tip from drying out even without the cap on.



11.2mm

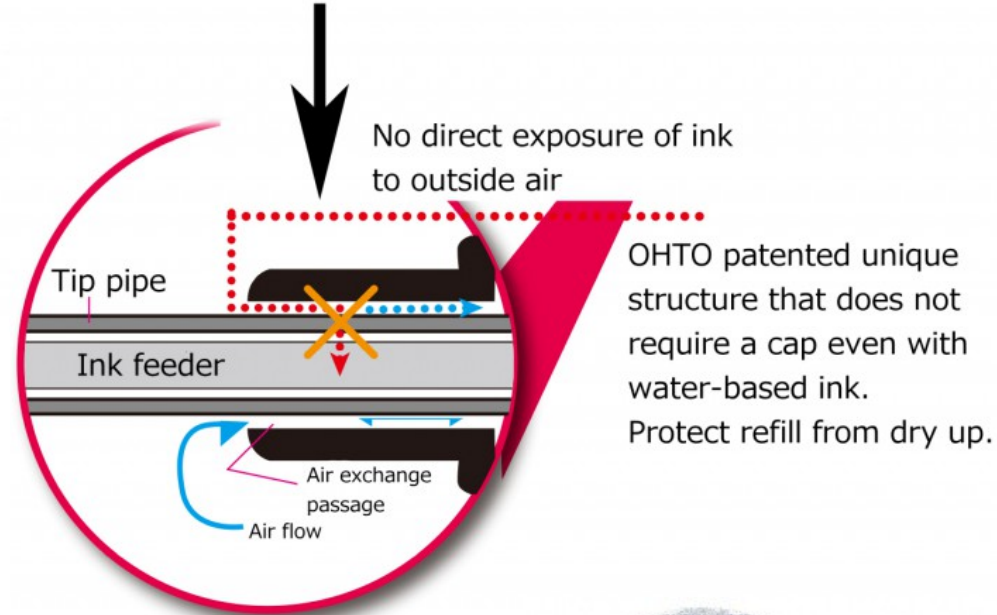
142.3mm

Weight: 25.8m



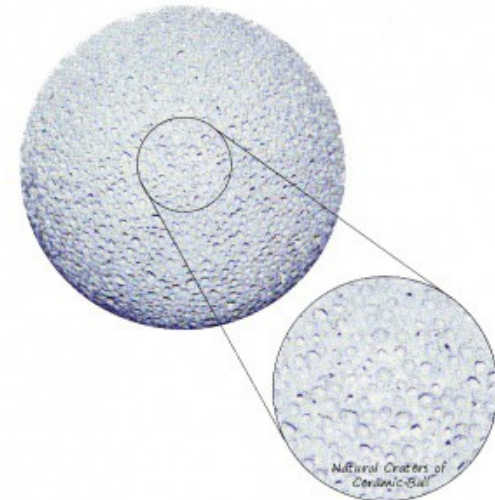
Black Brown Wine red Blue

Model: CB-10NBL
Refill: Ceramic Roller Refill



SiC Ceramic Ball

Writing ball is made of high-quality and hard SiC ceramic having unlimited natural craters. The ink get along very well with SiC Ceramic. It does not rust, and gives instant and smooth writing contineously.





Blue

Black

Orange

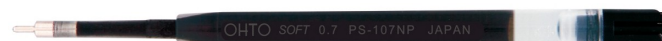
Silver



GS01

[Global Standard]

- Global standard G2 type refill



- Beautifully shining alumite processing aluminum body.
- Unique body shape that changes from hexagonal to round.

circle shape



hexagonal shape

Model: GS01-S7
Refill: PS-107NP(0.7mm/Black)
Ink: Low viscosity Soft Ink